

Bridge Theatre (Guys & Dolls) Visual Guide



**BRIDGE
THEATRE**

Hello and Welcome

Hello, and welcome to the Bridge Theatre!

This visual story has information and pictures to help you familiarise yourself with the venue before your visit to see *Guys & Dolls*.

We're always looking to improve our accessibility resources, so if you have any feedback on this guide, or questions about something you read, please contact us:

Phone: 0333 320 0051

Email: access@bridgetheatre.co.uk

We hope you have a lovely time with us,

The Bridge Theatre Team

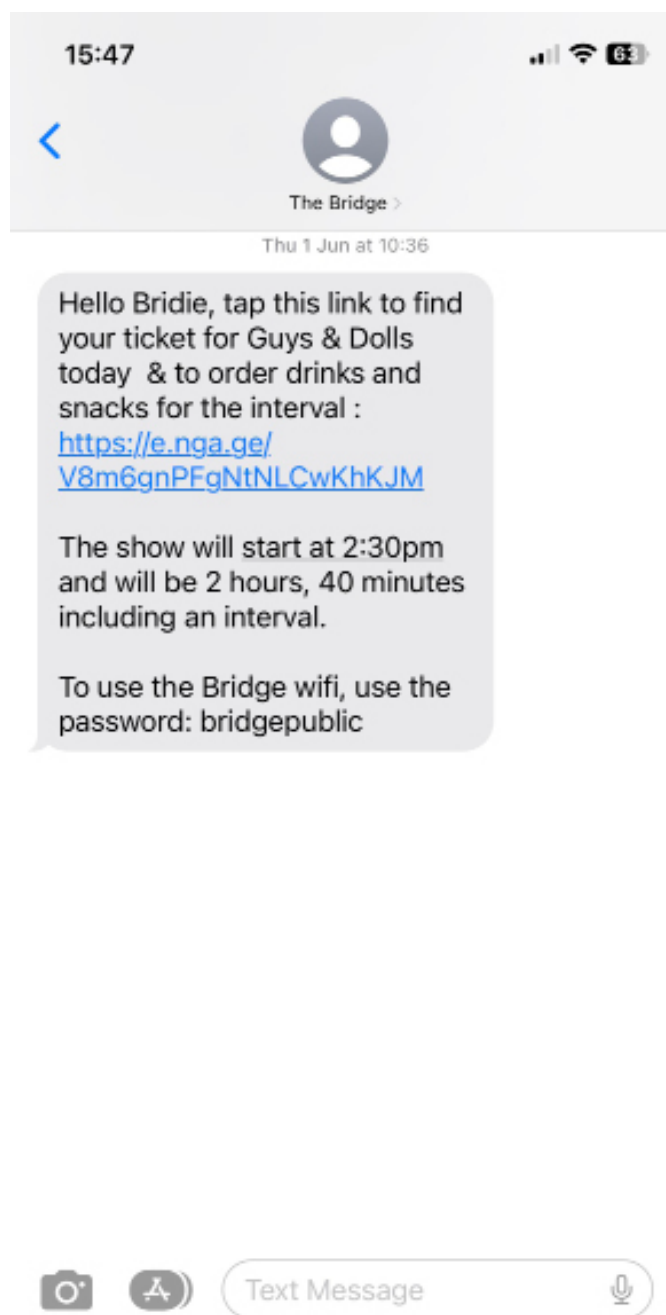




Your Tickets

If you add your mobile number to your Bridge Theatre account in advance of the performance day, you'll receive a text with a link to your tickets.

This is what the text might look like:



Your Journey to The Bridge

The closest tube stations are London Bridge and Tower Hill.

This is a photo of London Bridge tube station.



This is what a walking route might look like from there.

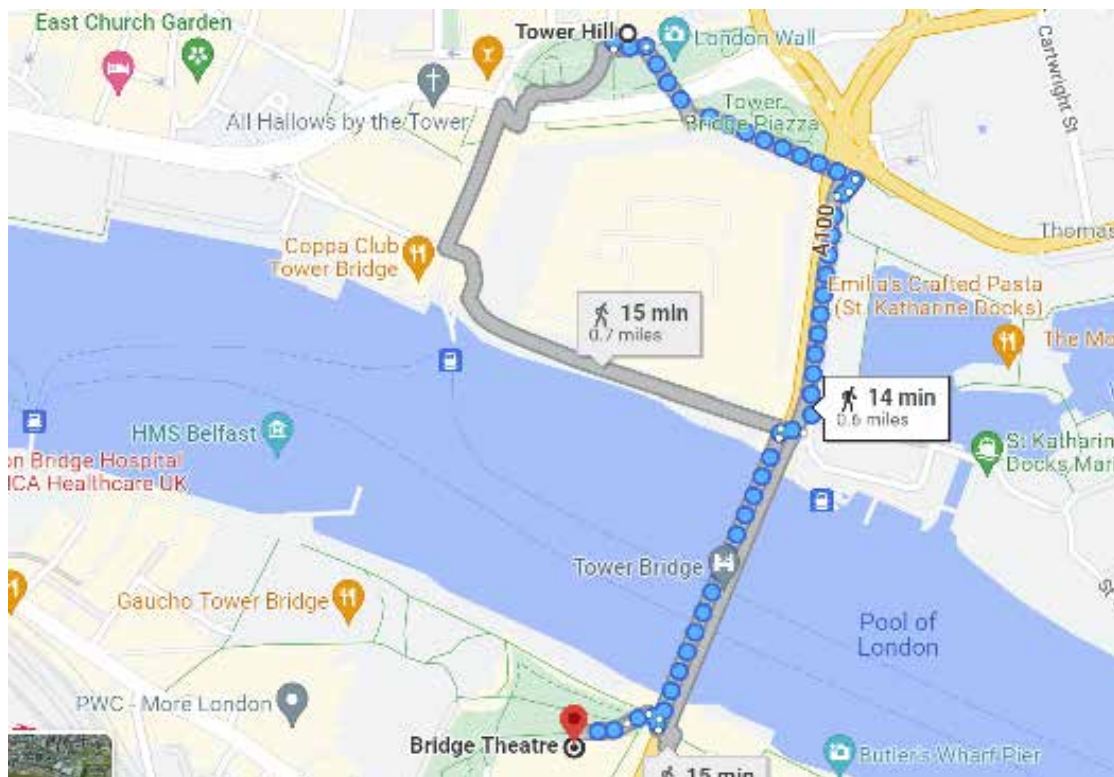


Your Journey to The Bridge

This is a photo of Tower Hill tube station.



This is what a walking route might look like from there.



Your Journey to The Bridge

You'll know you're nearby when you see Tower Bridge.



If you'd like more information about your journey, like drop off points, level access and parking bays, you can:

Email access@bridgetheatre.co.uk

or

Call 0333 320 0051

and we'd be happy to answer your questions.

Arriving at The Bridge

If you're arriving in daylight, the theatre entrance will look like this



When it gets dark, the theatre will look like this



Arriving at The Bridge

When you arrive, there may be a queue to enter the building.

Our friendly door staff may ask to look in your bag as a security check.



You'll enter the foyer through our front doors.



Inside the Foyer

The Box Office is immediately on the right and will look like this.



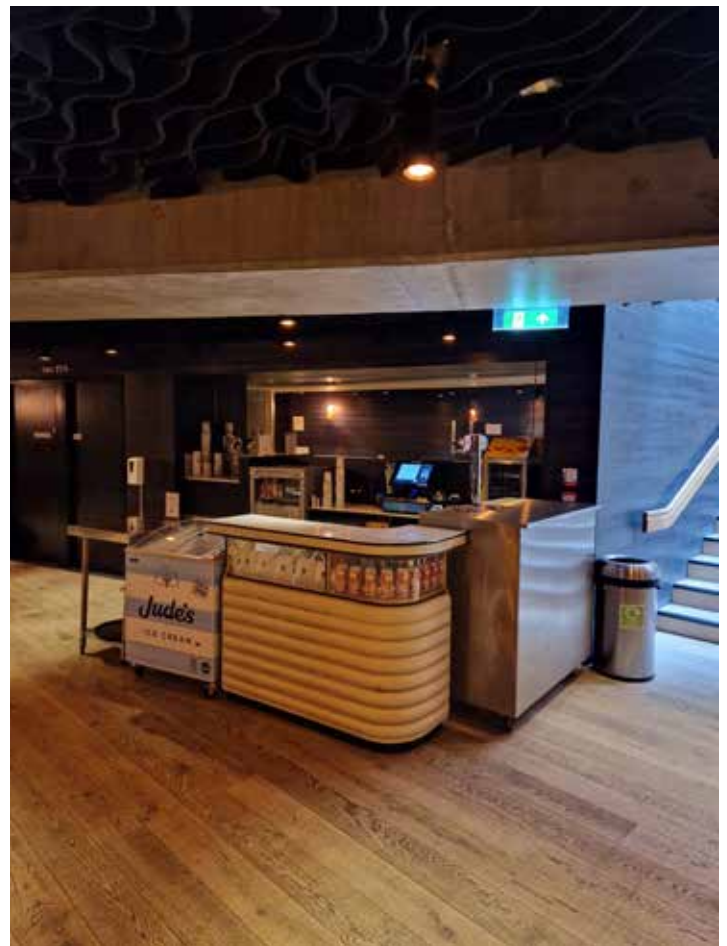
Inside the Foyer

The bar is along the right hand side of the foyer. If you want to order a drink you can queue here. It can get quite busy but don't worry - there's room for everyone.



Our menu is on the back of the bar on chalkboards. If you'd like a printed menu, or a menu in large print, let one of the bar team know.

There is also a second bar down the stairs in our Lower Foyer, where there may be less of a queue.



Inside the Foyer

There will be places to sit at tables, plus stools and a low bar along one side of the room.

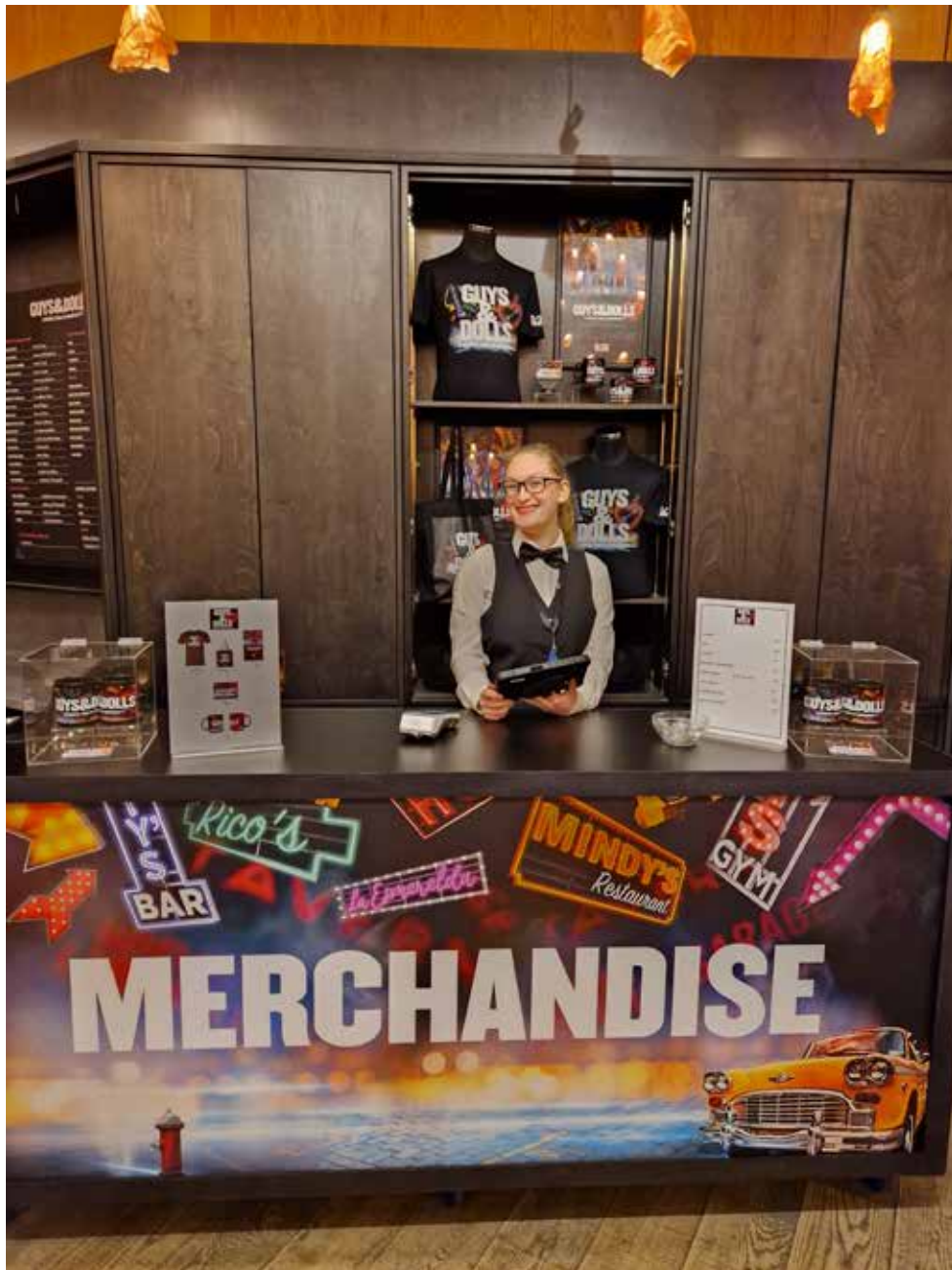
It can get very busy before a show. If you need assistance please ask a member of staff.



Inside the Foyer

There will be staff members in shirts and waistcoats selling programmes and merchandise.

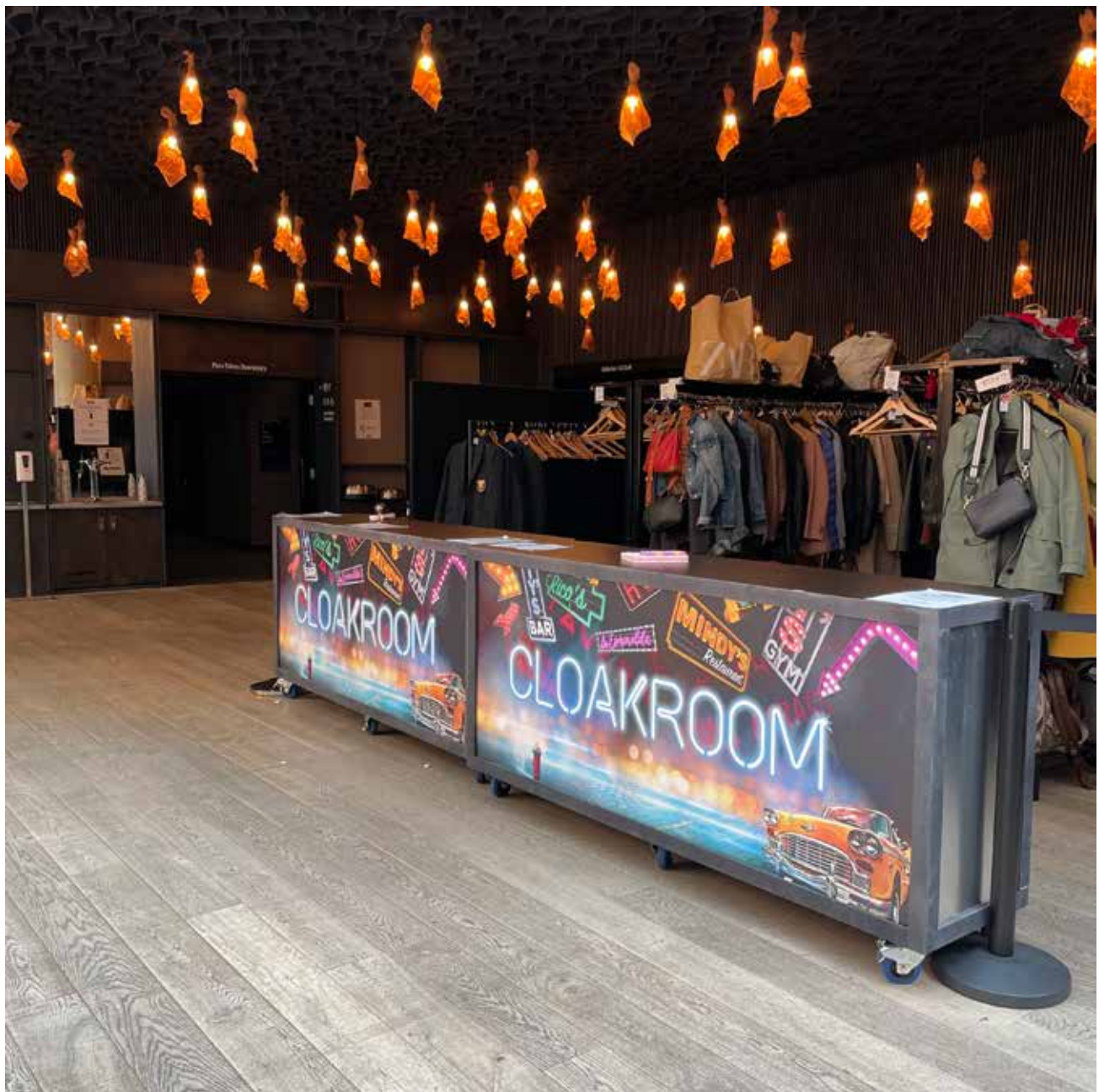
You can ask them questions if you need to.



Inside the Foyer

The cloakroom is at the back of the foyer. If you have standing immersive tickets you'll need to leave any coats and bags here. Otherwise you can keep these with you if you wish.

Lots of people have to use the cloakroom so there may be a queue, but don't worry we won't let you miss the beginning of the show.



Inside the Foyer

Some toilets are on the left of the cloakroom. There is an accessible toilet on this level.



There are more toilet cubicles down in the lower foyer, via our main staircase, or our accessible lift. There should be a member of staff present to help you use the lift.



The Show

Guys & Dolls will have two halves, with a 15-20 minute break between them.

An announcement will be made by one of our actors to let you know it's time to move into the performance space. One of the team may ring a bell too.

If you need help finding where to go you can ask one of our members of staff, who wear shirts, bow ties and waistcoats like below.



The Show

Our production of *Guys & Dolls* is immersive which means some of the cast may come out into the stage area before the show actually begins.

If you have standing immersive tickets, you may notice people in costumes walking right next to you, or they may speak to you. You don't have to chat to them if you don't want to.

You may also notice people dressed as police officers. These are our Pit Stewards, and are there to help move the audience and keep everyone safe as the musical takes place.



The show

You'll know when the performance has started as the band will begin playing and the lights may go down.

If you need to leave during the performance we have a live stream set up just outside, so you won't miss anything.



The Show – Interval

After the first half the cast will exit the stage area and the band will stop playing.

During the break you can choose to stay in the auditorium if you want to, or you can leave the auditorium and use the facilities or stretch your legs.

The foyer will be busy during this time, and it may be darker than when you arrived.



The Show – Interval

This break normally lasts 20 minutes.

After around 15 minutes, a musical and dance performance will begin in the auditorium. This is not part of the main show, and you're welcome to watch this or remain in the foyer.



The lights will go down again when it's time for the second half to start and the band will begin again.

After the Show

At the end, the whole cast will come out on stage to sing the final song. Audience members will clap their hands to show they enjoyed the performance.



After this, all of the stage lifts will be lowered and the cast members may stay to dance with the audience. If you have standing immersive tickets you're welcome to dance too if you like, but there's no pressure.

After the Show

People will start to leave the auditorium now.

It may feel busy and there may be some queues when leaving the auditorium but don't worry - there's room for everyone.

You can choose to wait in the auditorium until it is quieter if you wish.



Further Information

We hope you've found this guide helpful, but welcome your questions.

If you would like more information on:

- Upcoming access performances
- Joining our Access List (for disabled concessionary rate tickets)
- Our accessible facilities
- Your upcoming visit

Please call us on 0333 320 0051 or email us access@bridgetheatre.co.uk, and we'll be happy to help as much as we can.

We're looking forward to seeing you soon.

All our best,
The Bridge Theatre

